

DANOR **ARC**

Outdoor Cove Lighting  
**CROWN NARROW**



- **Narrow beam angle**
- **DALI 2.0 dimmable**
- **±85° vertical rotation**
- **Waterproof IP66 in the specific installation environment**

# Outdoor Cove Lighting

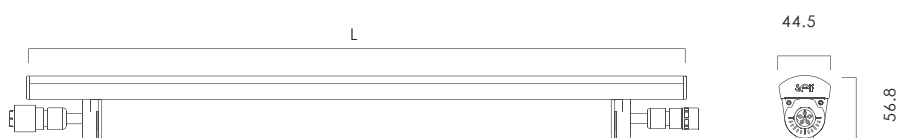
## CROWN NARROW



- Quick connection
- Narrow beam angle
- DALI 2.0 dimmable
- Linkable, max.linkable length: 25m
- Lockable, precision aiming adjustment:±85°vertical rotation
- IP rating: IP66 (in the specific installation environment )
- Lifetime: 50,000hrs (ta=35°C)
- Ta: -25°C ~ 50°C
- Material: Aluminum alloy



Dimensions: inches,mm

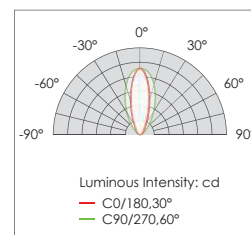


### Specifications

Model	Rated Input (VAC)	Length	CCT (K)	Beam Angle	Ra	Power (W)	Luminous flux (TYP@4000K)lm
CROWN NARROW-L12-220V-D	220-240VAC	300mm	3000K 4000K	30°×60°	85	10	1100
CROWN NARROW-L45-220V-D	220-240VAC	1200mm	3000K 4000K	30°×60°	85	40	4300
CROWN NARROW-L72-220V-D	220-240VAC	1778mm	3000K 4000K	30°×60°	85	60	7080

\* 1pc LED fixture, 2pcs screws, 1pc cable end cap.

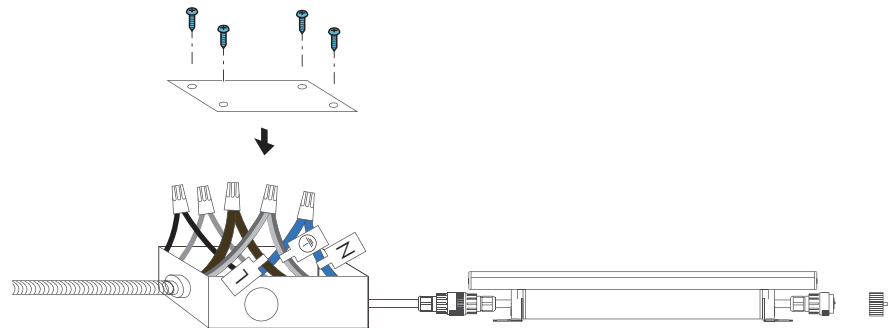
### Photometrics



# Outdoor Cove Lighting

## CROWN NARROW

### Wiring Diagram

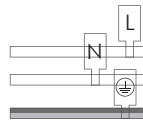


AC connection :

Brown: " L "

Blue: " N "

Yellow/green: " ⊕ "



Dimming connection :

Black: " DALI + "

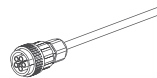
Gray: " DALI - "

### Accessories

#### Description

#### Length

Input cable



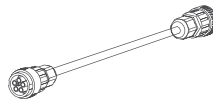
1500mm

### (Accessories optional

#### Description

#### Length

Soft connector

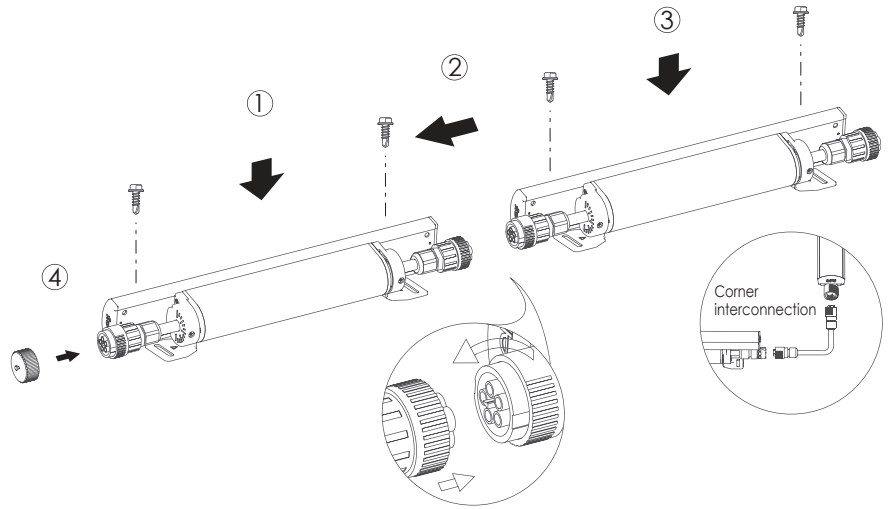


300mm

# Outdoor Cove Lighting

## CROWN NARROW

### Installation



### Application

Can not be applied directly in the open air, need to be sheltered, the specific application is shown below:

