

**INSTRUCCIONES DE MONTAJE / INSTALLATION INSTRUCTIONS**

**HUT**

01810-XXXX / 01820-XXXX / 01830-XXXX



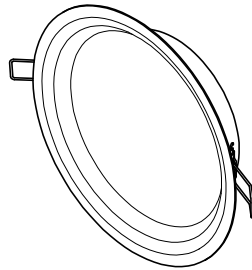
**ES:** La fuente de luz de esta luminaria es no reemplazable; cuando la fuente de luz alcance el final de su vida, se debe sustituir la luminaria completa.

**EN:** The light source of this luminaire is non-replaceable; When the light source reaches the end of its life, the complete luminaire must be replaced.

**ES:** Se debe mantener un aislamiento reforzado entre la alimentación en baja tensión (BT) y los conductores de control.

**EN:** A reinforced insulation must be maintained between the low voltage supply (LV) and the control conductors.

**Nexia**  
Culture x light



NEXIA ILUMINACIÓN S.L.  
Polígono Industrial Can Carner  
C/ Priorat, 14-20, 08211 Castellar del Vallès  
Barcelona, SPAIN  
Tel. +34 93 715 47 12  
info@nexia.es www.nexia.es

FIG-1

	D	d
Ref: 01810-xxxxx	Ø80mm	MAX: 15mm
Ref: 01820-xxxxx	Ø180/200mm	MAX: 15mm
Ref: 01830-xxxxx	Ø115mm	MAX: 15mm

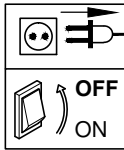
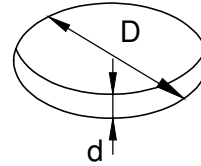


FIG-2

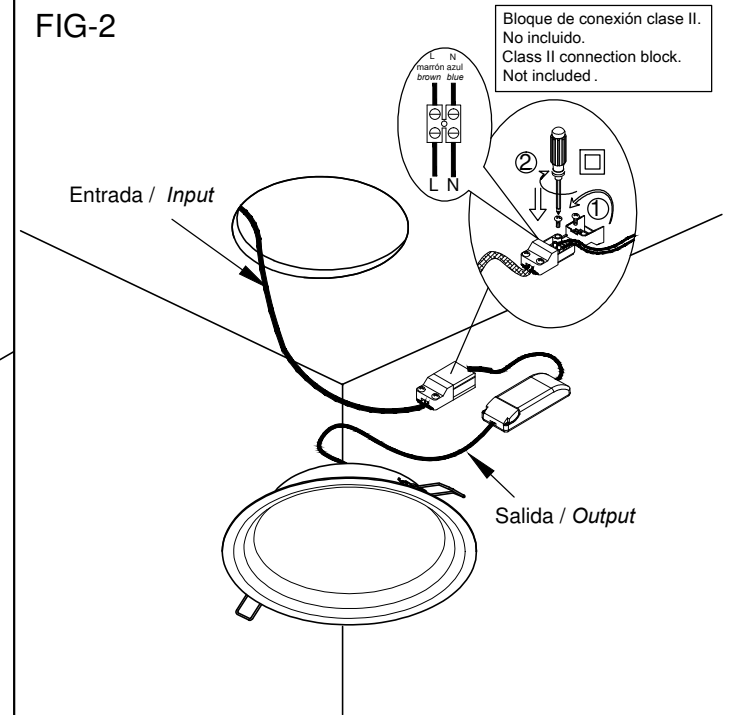
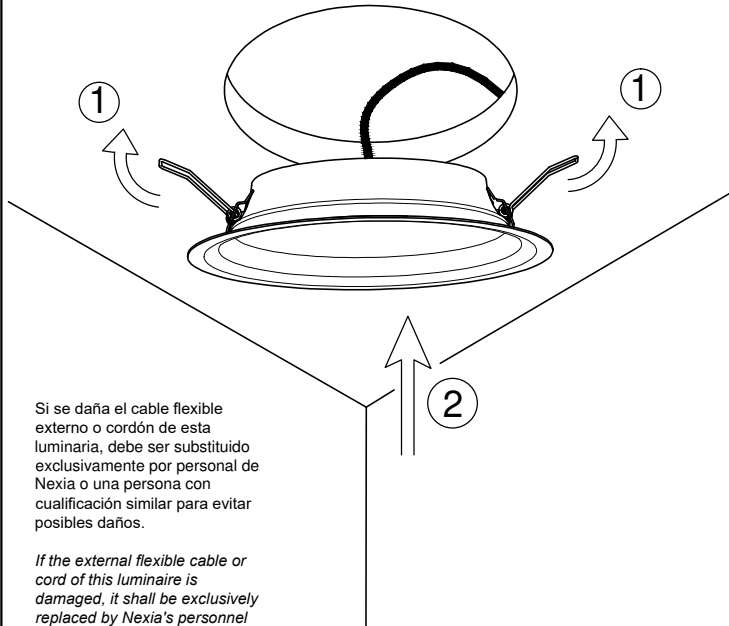


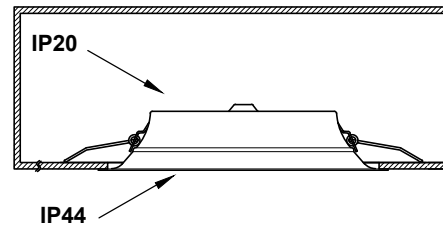
FIG-3



Si se daña el cable flexible externo o cordón de esta luminaria, debe ser substituido exclusivamente por personal de Nexia o una persona con cualificación similar para evitar posibles daños.

If the external flexible cable or cord of this luminaire is damaged, it shall be exclusively replaced by Nexia's personnel or a similar qualified person in order to avoid a hazard.

FIG-4



No cubrir las luminarias con material aislante térmico.  
Don't cover luminaires with thermal insulation material.

Uso exclusivo para interiores.  
For indoor use only.

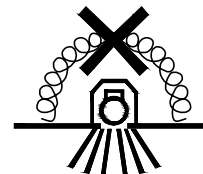


FIG-5

