

ZIGBEE ROLLER SHUTTER RELAY SWITCH



Actuator



Features

The Zigbee Roller Shutter Relay Switch turns a motorized roller shutter, awning or rolling sunshades into a remotely controlled one with hassle-free installation, no need for DIY work. It can be remotely controlled via smartphone. Automatic control is also possible (through a compatible home automation gateway).



AUTO CALIBRATION

No adjustments are needed, the Relay Switch will do an automatic self-calibration on the equipment



ULTRA LOW PROFILE

Installation in electrical boxes from >30mm



INSTALLATION WITHOUT DIY WORK

On the existing controller or at the electrical panel (DIN Rail Box needed*)



UPDATE OVER THE AIR (OTA)

The relay switch is quick to update thanks to the OTA function. Updates can be carried out via a compatible home automation system.



COMPATIBLE WITH ALL ZIGBEE ECOSYSTEMS

Zigbee 3.0, this relay switch is 100% Zigbee interoperable

Technical specifications

Power supply: 230V AC ~ 50Hz

Switching capabilities: 230V AC – 3A

Consumption: <1W

Maximum motor power:

280W Max – 60 Nm Max – Integrated zero crossing

See page 5 – List of compatible motors available on www.nodon.fr/en/loads

RF protocol: Zigbee 3.0

Radio frequency range: 2.4 GHz

RF power max: +10dBm

Range: up to 40m indoors

Operational temperature: -20°C to 60°C

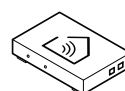
Protection rating: IP 20

Rolling sunshades compatible

Device ID Type: Window Covering Device (0x0202)

Commercial Warranty: 2 years

Requires a Zigbee compatible home automation system



The Zigbee Roller Shutter relay Switch works only with a Zigbee compatible home automation system (automatic or remote control).

List of compatible home automation gateways available on www.nodon.fr/en



Renovation



Control a roller blind in an office

Serenity



Remote control and presence simulation if no one is at home



Central management of restaurant terrace awnings with a smartphone

Comfort



Hotel room roller shutter control via a tablet

Installation

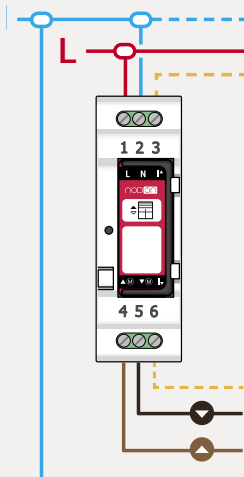


- N** Terminal for the Neutral
- L** Terminal for the Line
- ↑** Input terminal for the wired switch "up"***
- ↓** Input terminal for the wired switch "down"***
- ▲ (M)** Motor output terminal "up"
- ▼ (M)** Motor output terminal "down"

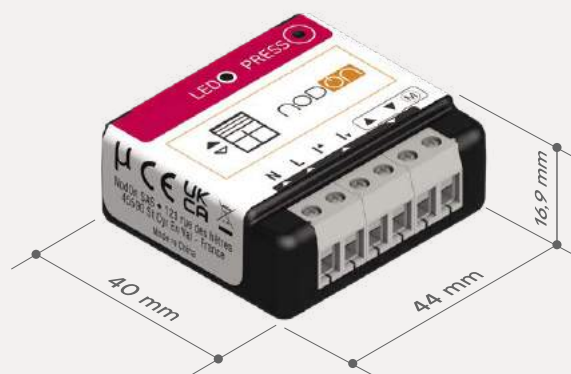
Note: Each terminal should be installed with a cable from 1.5mm² to 4mm² maximum, stripped of 8mm.

***Wired switch optional (see the installation diagrams section on the next page)

*Wiring of the Zigbee Roller Shutter Relay Switch in the DIN Rail Box



Dimensions

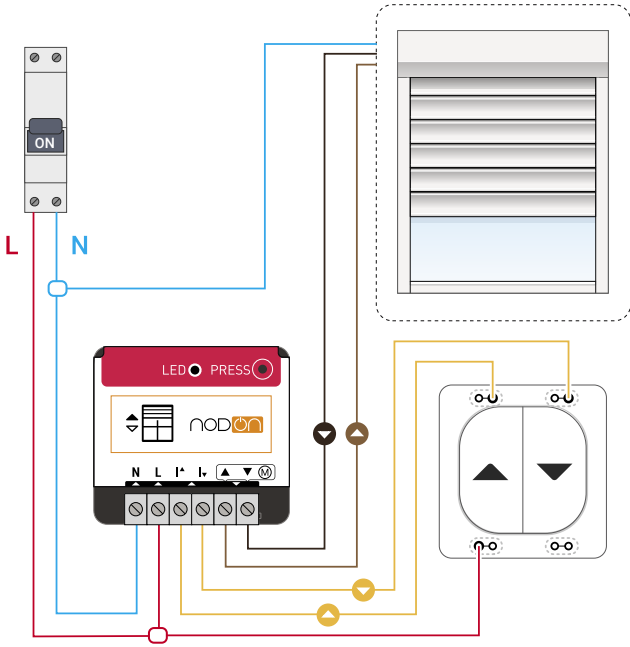


Reference

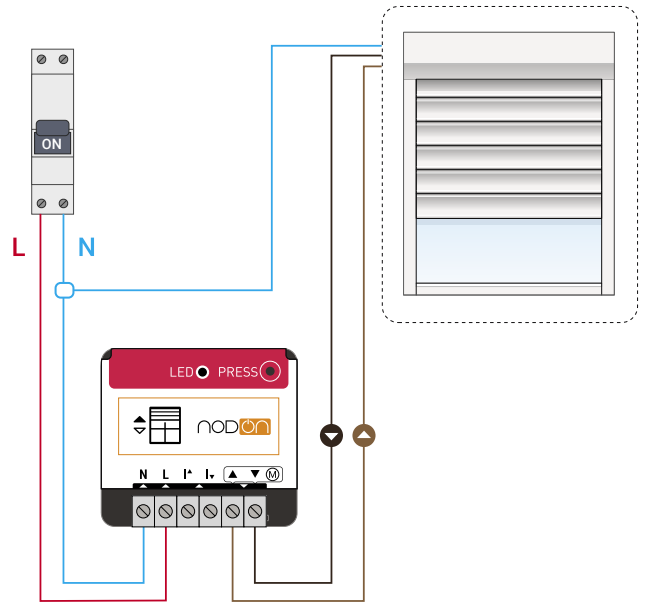
SIN-4-RS-20
EAN: 3700313925201

Zigbee Roller Shutter Relay Switch wiring diagrams

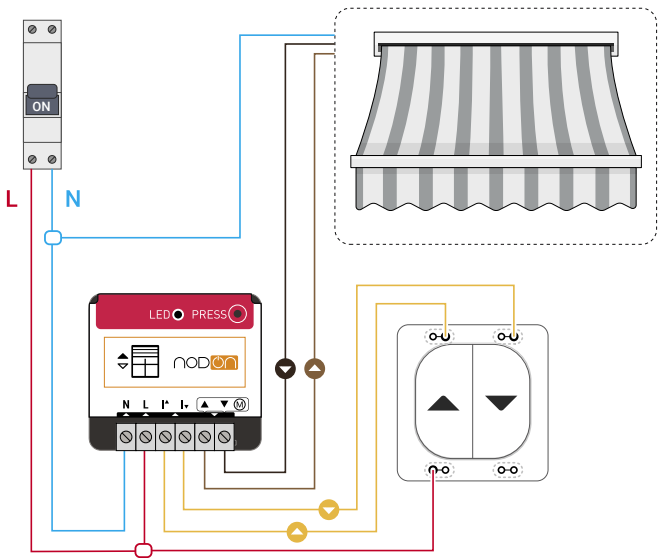
Roller shutter



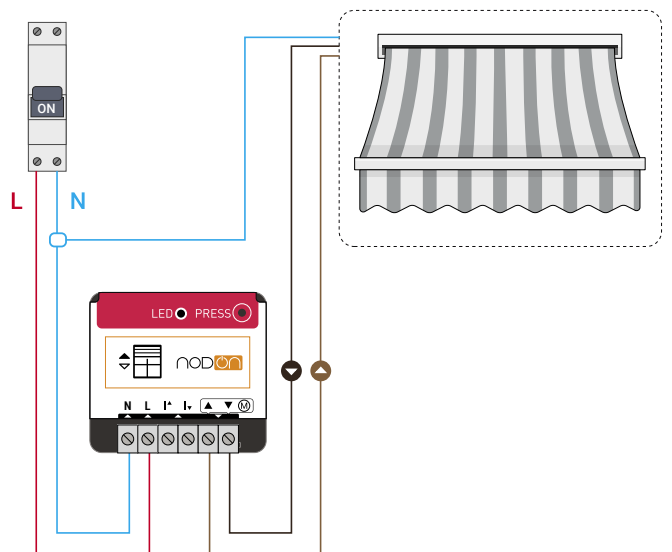
Roller shutter without wired switch



Awning

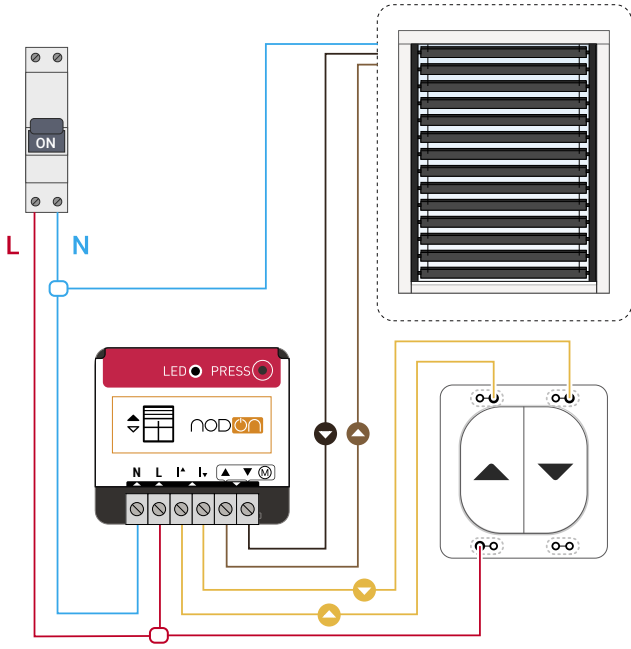


Awning without wired switch

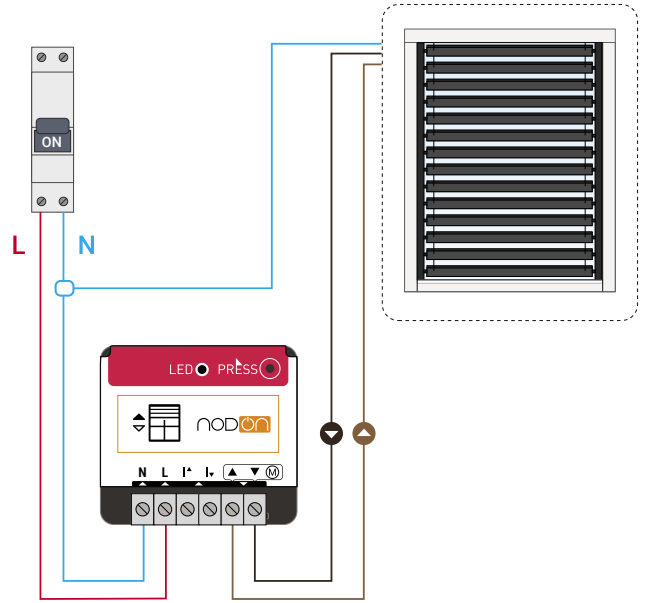


Zigbee Roller Shutter Relay Switch wiring diagrams

Rolling sunshades



Rolling sunshades without wired switch



Motors compatible with the Zigbee Roller Shutter Relay Switch

NICE



Range	EM817	MA1517	EM	PLUSM	EMH5012	EPLUSMH5012
Model	8/17	15/17	15/17 • 30/17 50/17	15/17 • 30/17 50/17	50/12	50/12

FRANCIAFLEX



Range	FRANCIASoft
Model	10/16 • 50/12 20/16 • 35/16



MOTORSTAR

Range	Roll K6
Model	10/17 20/17 • 40/17



SELVE

Range	SP
Model	2/15 • 2/20

BECKER



Range	E01	E14	M05 (HK)	PS - PS+	M	PR+	PS	PS+	E02
Model	12/17 20/17 30/17 40/17 8/17 • 5/16 9/16	12/17 • 20/17 30/17 • 40/17 8/17	20/17 30/17 50/11 44/14 60/11	40/17 50/11	5/30 • 120/11 • 50/17 60/11 • 13/9 • 9/16 12/17 • 15/17 • 20/17 30/17 40/17 • 50/11 7/17 • 8/17 • 5/20 8/17 • 15/17 • 25/17	3/30 • 5/16 • 5/20 5/30 • 9/16 • 8/17 12/17 • 20/17 • 30/17 37/17 • 50/11 • 50/17 60/11	3/30 • 5/16 • 5/20 5/30 • 9/16 • 8/17 12/17 • 20/17 • 30/17 37/17 • 50/11 • 50/17 60/11	3/30 • 5/16 • 5/20 5/30 • 9/16 • 8/17 12/17 • 20/17 • 30/17 37/17 • 50/11 • 50/17 60/11	8/17 12/17 20/17 30/17
Range	E03	C01	C03	301	M05	M06	M07	M19	
Model	5/16 • 9/16 5/17 • 8/17 9/17 • 8/17 12/17 20/17 30/17	5/16 • 9/16 8/17 • 12/17 20/17 • 30/17 40/17	8/17 12/17 20/17 30/17	5/16 9/16 8/17 12/17 20/17 30/17 40/17	12/17 • 15/17 • 20/17 25/17 • 30/17 • 40/17 50/17 • 44/14 • 50/11 60/11 • 60/17	35/8 • 60/8 • 35/3	60/8	6/20 • 10/11	

CHERUBINI



Range	PLUG&PLAY 3000 045	PLUG&PLAY PLUS 035	PLUG&PLAY PLUS 045	PLUG&PLAY 045	PLUG&PLAY OCEAN EASY 045	PLUG&PLAY SHORT 045	PLUG&PLAY SHORT RX 045	GARDA RX 045	OCEAN 045
Model	6/17 • 10/17 15/17	5/30 • 9/16	6/17 • 10/17 15/17 • 25/17 32/17 • 40/17 50/12	6/17 • 10/17 15/17	10/17 • 20/17	6/17	6/17	10/17 • 15/17 25/17 • 32/17 40/17 • 50/12	15/17 • 25/17 32/17 • 40/17 50/12
Range	OCEAN 058	GARDA 045	GARDA 058	ROLL 035	ROLL EASY 045	ROLL 045	MICRO 045	MICRO EASY 045	
Model	20/75 • 40/32	10/17 • 15/17 25/17 • 32/17 40/17 • 50/12	20/75 • 40/32	3/30 • 5/30 5/21 • 9/16	10/17 • 15/17 25/17	6/17 • 10/17 15/17 • 25/17 30/17 • 40/17 50/12 • 7/30 15/30	10/17	10/17	

SIMU



Range	DMI5	DMI6	T3.5	T3.5 AUTO	T5	T5 AUTO/AUTOJOB	T5 AUTO SHORT	T5 WORK	T5E	T6
Model	08/17 • 10/17 15/17 • 20/17 25/17 • 30/17 35/17 • 40/12 50/12	100/12 • 120/12 40/17 • 55/17 60/12 • 70/17 80/12 • 85/17	3/23 • 3/30 4/16 • 6/16 6/18 • 9/16 9/16 • 10/12 13/10	4/16 • 9/16 13/10	8/17 • 10/17 10/12 • 15/12 6/12 • 20/17 15/15 • 15/17 20/10 • 20/12 20/17 • 25/17 30/17 • 35/07 35/17 • 40/12 50/12	6/17 • 10/17 15/17 • 20/17 25/17 • 35/17	6/17	6/17 10/17 15/17 20/17 25/17 35/17	8/17 • 10/17 15/17 • 20/17 25/17 • 35/17 50/12	40/17 • 55/17 60/12

SOMFY



Gamme/Range	ILMO 50 WT	MS100	MS200
Model	6/17 10/17 • 20/17 30/17 • 35/17	10/17	30/17



Compatible with equivalents mechanical stop motors if <60 Nm