

# SLIM

E' QUESTIONE DI POTENZA, SI. MA ANCHE DI VOLUMI, E SLIM RIESCE A CONIUGARE ENTRAMBE LE CARATTERISTICHE IN UN PRODOTTO AD ALTISSIMA RESA, DI FACILE INSTALLAZIONE, INGOMBRI CONTENUTI E DOTATO DELLA CONSUETA FLESSIBILITÀ FRANCESCONI, IL CHE CONSENTE AL PRODOTTO UNA TRASVERSALITÀ COMPLETA, SIA NEL CASO IN CUI SIATE CHIAMATI A ILLUMINARE ELEGANTI CONTESTI RESIDENZIALI CHE NELL'EVENTUALITÀ DI AVERE IN CANTIERE UN IMPORTANTE PROGETTO PER SPAZI PUBBLICI, O CHE LA VOSTRA VOCAZIONE SIA L'ILLUMINAZIONE DI OPERE ARCHITETTONICHE E MUSEALI, SICURI CHE IL PROTAGONISTA SARÀ SEMPRE IL PROGETTO.

IT'S ALL ABOUT THE POWER. E SLIM MANAGES TO COMBINE BOTH SIZE AND POWER TO CREATE A HIGH-PERFORMANCE, EASY TO INSTALL, AND COMPACT PRODUCT. IT IS ALSO VERY FLEXIBLE, IN CASE YOU ARE CALLED TO ILLUMINATE ELEGANT RESIDENTIAL CONTEXTS, PUBLIC SPACES. OR A MUSEUM. SLIM WILL ALWAYS ANSWER YOUR CALL.

## COMMON FEATURES:

- STRUTTURA IN ALLUMINIO PRESSOFUSO ENAB46100.
- DOPPIA VERNICIATURA EXTRA RESISTENTE (TEST IN NEBBIA SALINA UNI ISO9227:2012)
- VITI A BRUGOLA IN ACCIAIO INOX A4.
- DIFFUSORE IN VETRO TEMPRATO EXTRACHIARO.
- APPARECCHIO PREDISPOSTO PER SINGOLA ENTRATA CAVO CON PASSACAVO IN GOMMA IP66 PER CAVI UNIPOLARI.
- GUARNIZIONI IN SILICONE.
- CONFORME ALLE NORME EN60598-1 E RELATIVE PARTI SECONDE.
- DIE CAST(ED) ENAB46100 ALUMINUM HOUSING.
- HIGH-RESISTANCE DOUBLE PAINTING PROCESS (UNI ISO9227:2012 SALINE TEST COMPLIANT).
- A4 STAINLESS STEEL SEALING ALLEN SCREWS.
- EXTRA CLEAR TEMPERED GLASS SCREEN.
- SINGLE-CABLE INPUT, PRE-ASSEMBLED WITH NEOPRENE CABLE AND IP68 WATER-STOP FAST CONNECTOR.
- SILICON GASKET.
- COMPLIANT EN60598-1 AND RELATED ANNEX.

## APPLIQUE FEATURES:

- STAFFA IN ACCIAIO INOX 316L.
- STAINLESS STEEL 316L BRACKET.

## FLOODLIGHT FEATURES:

- STAFFA IN ACCIAIO INOX 316L.
- APPARECCHIO PREDISPOSTO PER SINGOLA ENTRATA PRE-CABLATO CON CAVO IN NEOPRENE E CONNETTORE RAPIDO ACQUA STOP IP68.
- STAINLESS STEEL BRACKET 316L.
- SINGLE-CABLE INPUT, PRE-ASSEMBLED WITH NEOPRENE CABLE AND IP68 WATER-STOP FAST CONNECTOR.

## POLE-MOUNT FEATURES:

- SUPPORTO IN ACCIAIO 430.
- APPARECCHIO PREDISPOSTO PER SINGOLA ENTRATA PRE-CABLATO CON CAVO IN NEOPRENE E CONNETTORE RAPIDO ACQUA STOP IP68.
- STAINLESS STEEL BRACKET 430.
- SINGLE-CABLE INPUT, PRE-ASSEMBLED WITH NEOPRENE CABLE AND IP68 WATER-STOP FAST CONNECTOR.



# L.E.D. LED INNOVATION

PER FRANCESCONI, LA SORGENTE LUMINOSA È LA PIETRA ANGOLARE DELLA PROGETTAZIONE: LA CONOSCENZA INGEGNERISTICA DEI DIODI E LA LORO APPLICAZIONE OTTIMALE CONSENTE A FRANCESCONI DI ESSERE COSTANTEMENTE ALL'AVANGUARDIA IN FATTO DI LUCE E SISTEMI DI PRODUZIONE DELLA MEDESIMA, DALLA GESTIONE DELLA POTENZA IN ENTRATA AI SISTEMI DI DISSIPAZIONE DEL CALORE, ALLA RIFLESSIONE E RIFRAZIONE DEL FASCIO LUMINOSO, AVVALENDOSI DI COLLABORATORI ALTAMENTE SPECIALIZZATI E DEDICATI. SLIM NON FA ECCEZIONE, CON LA SUA RINNOVATA GAMMA DI LED CON POTENZE AUMENTATE E SPECIFICHE OTTICHE PER LA VALORIZZAZIONE DELLE ARCHITETTURE, STRADALI O PER PISTE CICLABILI.

FOR FRANCESCONI, THE LIGHT SOURCE IS THE CORNERSTONE OF DESIGN. THEIR ABILITY TO APPLY THEIR ENGINEERING KNOWLEDGE OF DIODES ALLOWS FRANCESCONI TO CONSTANTLY BE AT THE FOREFRONT IN TERMS OF LIGHT AND ITS PRODUCTION SYSTEMS, FROM THE MANAGEMENT OF INCOMING POWER TO SYSTEMS OF HEAT DISSIPATION, REFLECTION AND REFRACTION OF THE LIGHT BEAM, MAKING USE OF HIGHLY SPECIALIZED AND DEDICATED COLLABORATORS. SLIM IS NO EXCEPTION, WITH ITS RENEWED RANGE OF LEDS WITH INCREASED POWER AND SPECIFIC DESIGN FOR THE ENHANCEMENT OF STRUCTURES, ROADS OR EVEN CYCLE PATHS.



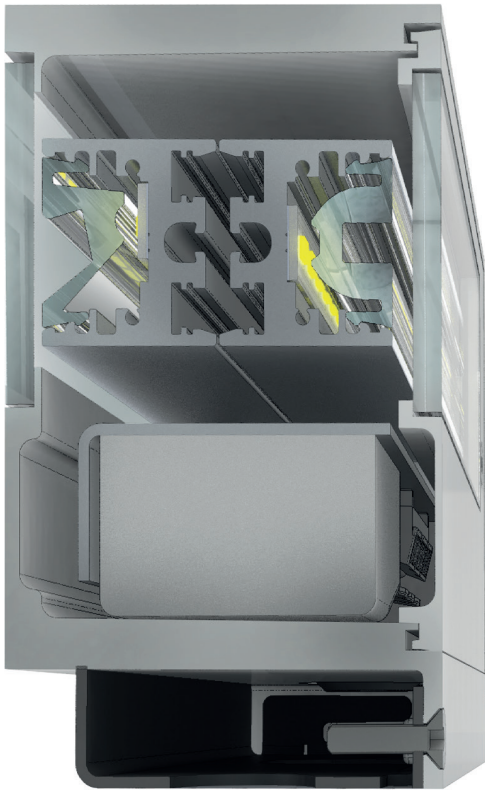
## FLUSH MOUNT



UN INGOMBRO RIDOTTO E UNA SORGENTE EFFICIENTE E AFFIDABILE NON POSSONO ASSOCIARSI A DETTAGLI POCO CURATI. LA VERSIONE APPLIQUE DI SLIM VANTA UN SISTEMA DI FISSAGGIO COMPLETAMENTE A SCOMPARSA, CHE CONSENTE UNA FACILISSIMA INSTALLAZIONE E UN RISULTATO PULITO E MINIMALE COME IL DESIGN CHE LA CARATTERIZZA: BASTA ASSICURARE LA SPECIALE PIASTRA IN ACCIAIO ALLA PARETE, FAR SCIVOLARE SOPRA IL CORPO DELLA LAMPADA E AVVITARE. PIÙ SEMPLICE DI COSÌ...

AN EFFICIENT AND RELIABLE PRODUCT CANNOT BE ASSOCIATED WITH FRIVOLOUS DETAILS. THE APPLIQUE VERSION OF SLIM BOASTS A COMPLETELY CONCEALED FIXING SYSTEM, WHICH ALLOWS FOR EASY INSTALLATION AND A CLEAN AND MINIMAL RESULT LIKE THE DESIGN THAT CHARACTERIZES IT: JUST FASTEN THE SPECIAL STEEL PLATE TO THE WALL, SLIDE IT OVER THE BODY OF THE LAMP AND SCREW. IT COULDN'T BE ANY EASIER!





## LARGE OR SMALL, ALWAYS SLIM

SPESSE SOLUZIONI MOLTO POTENTI PORTANO CON LORO UNA CERTA QUALITÀ PESANTEZZA FORMALE E VISIVA, NECESSITÀ DATA DALLA COMPONENTISTICA INTERNA E I SUOI VOLUMI.

IN FRANCESCOINI ABBIAMO INVECE DEDICATO PARTE DELLA NOSTRA RICERCA ALLA MINIATURIZZAZIONE DI TUTTI GLI ELEMENTI CHE COMPONGONO LA SERIE SLIM, PER RIUSCIRE A MANTENERE GLI ELEVATISSIMI FLUSSI LUMINOSI CHE QUESTA TIPOLOGIA DI PRODOTTO RICHIEDE MA AL CONTEMPO RIDURRE GLI INGOMBRI AL LORO MINIMO E NASCONDERE OGNI ELEMENTO MECCANICO ALLA VISTA PER PRESERVARE LA GRANDE PULIZIA FORMALE A CUI VI ABBIAMO DA MOLTI ANNI ABITUATI.

OFTEN VERY POWERFUL LIGHT FIXTURES SEEM BULKY, DUE TO THEIR COMPLEX INNER WORKINGS.

AT FRANCESCOINI WE HAVE DEDICATED PART OF OUR RESEARCH TO THE MINIATURIZATION OF ALL THE ELEMENTS THAT MAKE UP THE SLIM SERIES, TO BE ABLE TO MAINTAIN THE VERY HIGH LUMINOUS FLUXES THAT THIS TYPE OF PRODUCT REQUIRES BUT AT THE SAME TIME REDUCE THE OVERALL DIMENSIONS TO THEIR MINIMUM AND HIDE EVERY MECHANICAL ELEMENT FROM VIEW TO PRESERVE THE SLEEKNESS WE HAVE ACCUSTOMED YOU TO FOR MANY YEARS.

## BRIGHTEN UP YOUR WAY

ABBIAMO AUMENTATO LA POTENZA DEL PRODOTTO E IL SUO RENDIMENTO LUMINOSO PER INCREMENTARE LE POSSIBILITÀ APPLICATIVE DELL'APPARECCHIO SU PISTE CICLABILI, PARCHEGGI DI GRANDI DIMENSIONI E L'ILLUMINAZIONE STRADALE URBANA. IN SOMMA, TUTTE QUELLE SITUAZIONI DOVE L'ILLUMINAZIONE NON È SOLO UN FATTO ESTETICO, MA ANCHE DI ERGONOMIA E SICUREZZA.

WE HAVE INCREASED THE POWER OF THE PRODUCT AND ITS LIGHT OUTPUT TO IMPROVE USE ON CYCLE PATHS, IN LARGE CAR PARKS AND URBAN STREET LIGHTING. (IN OTHER WORDS, IN SITUATIONS WHERE LIGHTING IS NOT JUST AN AESTHETIC FEATURE, BUT ALSO NECESSARY FOR THE SAFETY OF VIEWERS).







# SLIM MINI APPLIQUE



MONO EMISSION



DOUBLE EMISSION

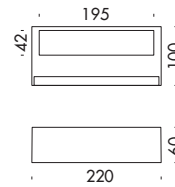
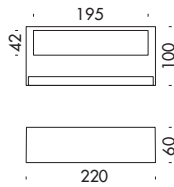
## PERFORMANCE DATA

TRUE POWER (W)	11.5
TRUE LUMENS (3000K)	1093 (.20)
TRUE LUMENS (4000K)	1155 (.20)
L90 LIFETIME (HRS)	72.000 (Ta 35°C)

## BUILD DATA

CLASS	I
NOMINAL VOLTAGE	220-240V 50/60Hz
POWER SUPPLY	INCLUDED ON-OFF
EXTERNAL CABLE	SINGLE INPUT
	NOT PRESENT
PROTECTION RATING	IP66 - IK08

## DIMENSIONS



## CODE COMPOSITION



### ● FINISH

- .1 - ANTHRACITE
- .2 - PURE WHITE (RAL9010)
- .4 - ALU GREY (RAL9006)
- .8 - DARK BROWN

### ■ LED COLOR

- .2 - 2700°K - CRI > 80
- .3 - 3000°K - CRI > 80
- .4 - 4000°K - CRI > 80

### ▲ BEAM

- .20 - 20° NARROW
- .50 - 35° MEDIUM
- .06 - ASYMMETRICAL
- .07 - WALL WASHER



- .1 - ANTHRACITE
- .2 - PURE WHITE (RAL9010)
- .4 - ALU GREY (RAL9006)
- .8 - DARK BROWN

- .2 - 2700°K - CRI > 80
- .3 - 3000°K - CRI > 80
- .4 - 4000°K - CRI > 80

- .20 - 20° NARROW
- .50 - 35° MEDIUM
- .06 - ASYMMETRICAL
- .07 - WALL WASHER

# SLIM APPLIQUE



MONO EMISSION

MONO EMISSION

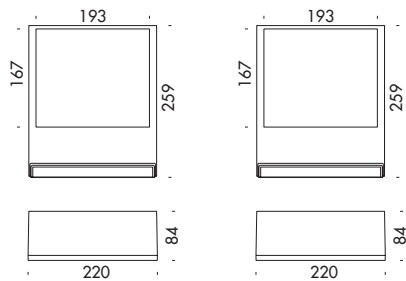
## PERFORMANCE DATA

TRUE POWER (W)	26.0W	45.3W
TRUE LUMENS (3000K)	2680 (.01)	5640 (.36)
TRUE LUMENS (4000K)	2792 (.01)	5875 (.36)
L90 LIFETIME (HRS)	90.000 (Ta 35°C)	90.000 (Ta 35°C)

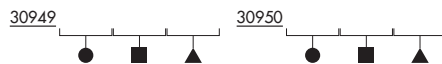
## BUILD DATA

CLASS	I	I
NOMINAL VOLTAGE	220-240V 50/60Hz	24V DC - 4XPWM-CV
POWER SUPPLY	INCLUDED ON-OFF	SEE END OF SECTION
EXTERNAL CABLE	SINGLE INPUT	SINGLE INPUT
	NOT PRESENT	NOT PRESENT
PROTECTION RATING	IP66 - IK08	IP66 - IK08

## DIMENSIONS



## CODE COMPOSITION



	30949	30950
● FINISH	.1 - ANTHRACITE .2 - PURE WHITE (RAL9010) .4 - ALU GREY (RAL9006) .8 - DARK BROWN	.1 - ANTHRACITE .2 - PURE WHITE (RAL9010) .4 - ALU GREY (RAL9006) .8 - DARK BROWN
■ LED COLOR	.2 - 2700°K - CRI > 80 .3 - 3000°K - CRI > 80 .4 - 4000°K - CRI > 80	.2 - 2700°K - CRI > 80 .3 - 3000°K - CRI > 80 .4 - 4000°K - CRI > 80
▲ BEAM	.01 - 10° SPOT	.36 - 25° MEDIUM .03 - 50° WIDE .53 - 50° x 24° ELLIPTICAL .52 - 24° x 50° ELLIPTICAL .07 - WALL WASHER .06 - ASYMMETRICAL



# SLIM FLOODLIGHT



MAX (230V DMX IN)

## PERFORMANCE DATA

TRUE POWER (W)	26.0W	45.3W
TRUE LUMENS (3000K)	2680 (.01)	5640 (.36)
TRUE LUMENS (4000K)	2792 (.01)	5875 (.36)
L90 LIFETIME (HRS)	90.000 (Ta 35°C)	90.000 (Ta 35°C)

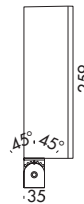
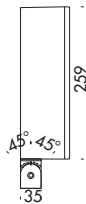
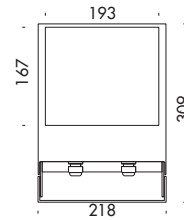
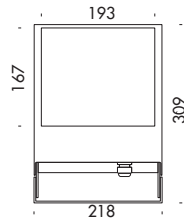
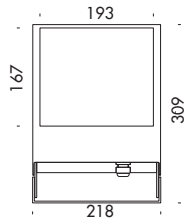
56.0 (ALL COLORS)
R=167, G=419,
B=101, W=579 (6500K)
60.000 - Ta 35°C

## BUILD DATA

CLASS	I	I
NOMINAL VOLTAGE	220-240V 50/60Hz	220-240V 50/60Hz
POWER SUPPLY	INCLUDED ON-OFF	INCLUDED ON-OFF
EXTERNAL CABLE	SINGLE INPUT	SINGLE INPUT
	3-POLES NEOPRENE	3-POLES NEOPRENE
	IP68 FAST CONNECTION	IP68 FAST CONNECTION
PROTECTION RATING	IP66 - IK08	IP66 - IK08

220-240V - DMX (RDM)
INCLUDED ON-OFF
1 <sup>ST</sup> INPUT:
3-POLES NEOPRENE
2 <sup>ND</sup> INPUT:
3-POLES NEOPRENE
IP66 - IK08

## DIMENSIONS



## CODE COMPOSITION

40906



- .1 - ANTHRACITE
- .2 - PURE WHITE (RAL9010)
- .4 - ALU GREY (RAL9006)
- .8 - DARK BROWN

40907



- .1 - ANTHRACITE
- .2 - PURE WHITE (RAL9010)
- .4 - ALU GREY (RAL9006)
- .8 - DARK BROWN

40909



- .1 - ANTHRACITE
- .2 - PURE WHITE (RAL9010)
- .4 - ALU GREY (RAL9006)
- .8 - DARK BROWN

● FINISH

■ LED COLOR

▲ BEAM

- .2 - 2700°K - CRI > 80
- .3 - 3000°K - CRI > 80
- .4 - 4000°K - CRI > 80

- .2 - 2700°K - CRI > 80
- .3 - 3000°K - CRI > 80
- .4 - 4000°K - CRI > 80

- .5 - RGB + W

- .01 - 10° SPOT

- .36 - 25° MEDIUM
- .03 - 50° WIDE
- .53 - 50° x 24° ELLIPTICAL
- .52 - 24° x 50° ELLIPTICAL
- .07 - WALL WASHER
- .06 - ASYMMETRICAL

- .01 - 10° SPOT
- .36 - 25° MEDIUM
- .32 - 45° WIDE
- .38 - 40° x 10°
- .70 - 10° x 40°

# SLIM POLE-MOUNT



SINGLE HEAD



DOUBLE HEAD

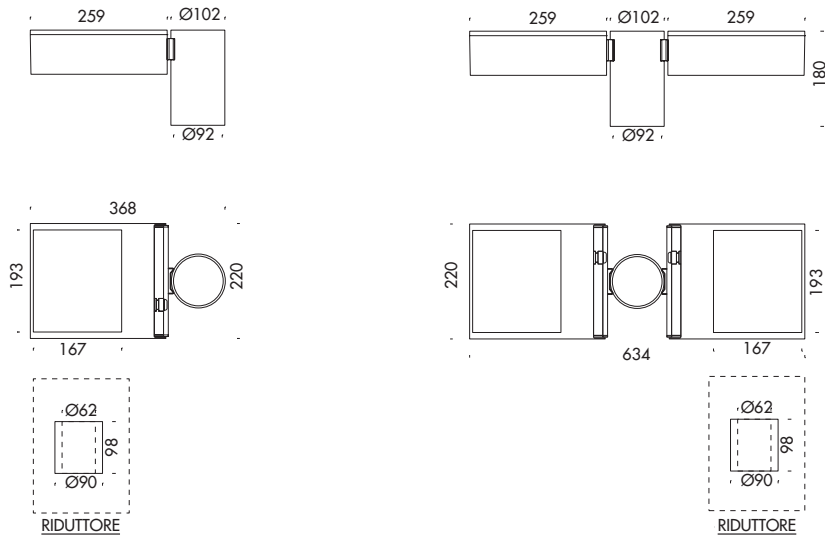
## PERFORMANCE DATA

TRUE POWER (W)	46.0W	90.0W
TRUE LUMENS (3000K)	5480 (.08)	10.961 (.08)
TRUE LUMENS (4000K)	5709 (.08)	11.418 (.08)
L90 LIFETIME (HRS)	90.000 (Ta 35°C)	90.000 (Ta 35°C)

## BUILD DATA

CLASS	I	I
NOMINAL VOLTAGE	220-240V 50/60Hz	220-240V 50/60Hz
POWER SUPPLY	INCLUDED ON-OFF	INCLUDED ON-OFF
OVERVOLTAGE PROTECTION	10Kv	10Kv
EXTERNAL CABLE	SINGLE INPUT	SINGLE INPUT
	3-POLES NEOPRENE 5MTS	3-POLES NEOPRENE 5MTS
PROTECTION RATING	IP66 - IK08	IP66 - IK08

## DIMENSIONS



## CODE COMPOSITION

70910	70911
● ■ ▲	● ■ ▲

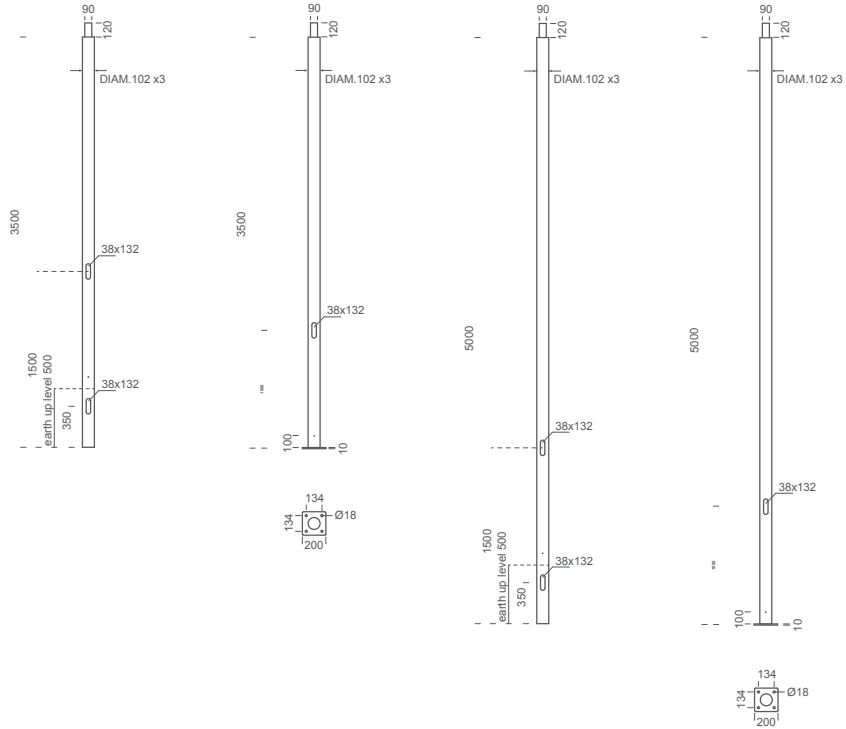
● FINISH	.4 - ALU GREY (RAL9006)	.4 - ALU GREY (RAL9006)
■ LED COLOR	.3 - 3000°K - CRI > 80 .4 - 4000°K - CRI > 80	.3 - 3000°K - CRI > 80 .4 - 4000°K - CRI > 80
▲ BEAM	.08 - STREET .09 - BICYCLE LANES	.08 - STREET .09 - BICYCLE LANES

# SLIM POLES

## BUILD DATA

	3,5 MTS	3,5 MTS	5 MTS	5 MTS
TOTAL HEIGHT	3500mm	3500mm	5000mm	5000mm
OVERGROUND HEIGHT	3160mm	3160mm	4660mm	4660mm
EXTERNAL DIAMETER	102mm	102mm	102mm	102mm
FIXING STYLE	BY BASE (4 x Ø18mm)	TO BE BURIED 500MM DEEP	BY BASE (4 x Ø18mm)	TO BE BURIED 500MM DEEP
INSPECTION PORT	YES	YES	YES	YES
TERMINAL BLOCK	YES	YES	YES	YES

## DIMENSIONS



## CODE COMPOSITION

	90912	90923	90913	90924
● FINISH	.4 - ALU GREY (RAL9006)	.4 - ALU GREY (RAL9006)	.4 - ALU GREY (RAL9006)	.4 - ALU GREY (RAL9006)

# POWER SUPPLY

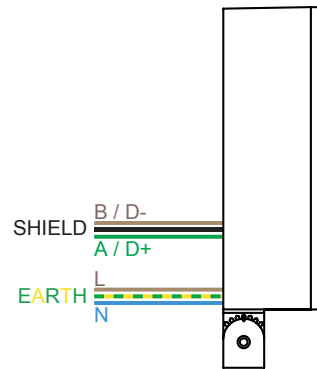
## SLIM SUPERIOR (ON-BOARD DMX)

### RGB+W CONTROLLER

#### **DMX**

**D041**  
TOUCH PANEL 86X86X36MM

**C106**  
RDM ADDRESS PROGRAMMING DEVICE ON DMX CABLE



### DRIVER

#### **IN 220/240V - OUT 24V**

<u>D000</u> 20W	118X35X26MM	IP67	<u>D003</u> 120W	150X53X35MM	IP67
<u>D001</u> 40W	150X53X35MM	IP67	<u>D010</u> 185W	228X68X39MM	IP67
<u>D002</u> 60W	163X43X32MM	IP67	<u>D020</u> 240W	244X68X39MM	IP67